



# 3D PDF Converter

**Version 5.0**

**Release Notes**

Details of new features, updated format support and bug fixes for 3D PDF Converter™.

# Table of Contents

- Version 5.0 .....2
  - Definition of Release Types.....2
  - Version Information.....2
  - Installation .....2
  - Language Support Overview.....2
  - Acrobat Pro Compatibility .....3
- System Requirements .....3
- Licensing.....3
- Format Support.....4
- New Features/Enhancements .....5
  - Autodesk Inventor .....5
  - CATIA V5 .....6
  - Industry Foundation Classes (IFC).....6
  - JT .....7
  - Parasolid .....8
  - PTC Creo.....8
  - Siemens PLM Software NX.....9
  - Solid Edge.....10
  - SolidWorks .....10
- Bug Fixes .....11

# Version 5.0

## Definition of Release Types

We define each release type as follows

- **Major release:** A major release associated with an incremented release number (e.g. 3 or 4) and an approximate 12 month product cycle.
- **Minor release:** An update between major releases that may include support for new file formats, new versions of currently supported formats, and bug fixes
- **Out of cycle patch:** An unscheduled update. These contain few functional updates with the intention to limit impact.

## Version Information

Item	Version Number
3D PDF Converter	5.0

## Installation

This update can be installed over any prior installation of 3D PDF Converter. For more installation information, please refer to the *3D PDF Converter Installation Guide*.

## Language Support Overview

3D PDF Converter provides support for multiple languages as noted in the table below. However, the language used is controlled by the local Adobe Acrobat® installation. If there is a 3D PDF Converter language option that matches the Acrobat installation then that language is used; if not, 3D PDF Converter defaults to English.

Tier 1 and Tier 2 are as defined by Adobe Systems.

Tier	3D PDF Converter Supported Languages
Tier 1	English, French, German, Japanese
Tier 2	Brazilian Portuguese, Italian, Korean, Spanish

## Acrobat Pro Compatibility

3D PDF Converter provides a plug-in for Adobe Acrobat Pro. The following table provides information about tested version compatibility. Note that older versions of 3D PDF Converter may work with newer Acrobat Pro releases, even if compatibility is not explicitly mentioned here.

3D PDF Converter	Compatible Acrobat Pro X/XI Version
<b>5.0</b>	Acrobat 11.0.0 to 11.0.10 Acrobat 10.0.0 to 10.1.12
<b>4.1 and 4.2</b>	Acrobat 11.0.0 to 11.0.6 Acrobat 10.0.0 to 10.1.9
<b>4.0</b>	Acrobat 11.0.0 to 11.0.5 Acrobat 10.0.0 to 10.1.8

If you have an earlier version of 3D PDF Converter (prior to 4.0) and need compatibility information, please contact [support@tetra4d.com](mailto:support@tetra4d.com)

## System Requirements

3D PDF Converter 5.0 no longer supports the following Microsoft® Windows® operating systems:

- Windows XP
- Windows Server 2003

More detailed version compatibility is available in the 3D PDF Converter Release Notes documentation.

## Licensing

**3D PDF Converter 5.0** uses the same license as version 4.2.

If you have already installed and licensed version 4.2, you should not need to do anything. If you are using a different version, then please contact [support@tetra4d.com](mailto:support@tetra4d.com) to get an updated license. Note that the 3D PDF Converter will run in trial mode for 21 days after installation, providing you an opportunity to use the product temporarily without a license key.

## Format Support

This release supports reading the following 3D file formats:

Format	Version	Extensions
<b>ACIS (SAT)</b>	Up to v23.0	SAT, SAB
<b>Autodesk Inventor</b>	Up to 2015	IPT, IAM
<b>CATIA V4</b>	Up to 4.2.5	MODEL, SESSION, DLV, EXP
<b>CATIA V5</b>	R4 to V5-6R2014	CATDrawing, CATPart, CATProduct, CATShape, CGR
<b>CATIA V6</b>	2011 to 2013	3DXML
<b>I-deas</b>	Up to 13.x (NX 5), NX I-deas 6	MF1, ARC, UNV, PKG
<b>IGES</b>	5.1, 5.2, 5.3	IGS, IGES
<b>Industry Foundation Classes (IFC)</b>	IFC2x Editions 2, 3 and 4	IFC, IFCZIP
<b>JT</b>	Up to version 10.0	JT
<b>Parasolid (X_T)</b>	Up to v27.0	X_B, X_T, XMT, XMT_TXT
<b>PRC</b>	All Versions	PRC
<b>PTC Creo</b>	Elements/Pro 5.0 Parametric 3.0	ASM, NEU, PRT, XAS, XPR
<b>PTC Pro/Engineer</b>	Up to Wildfire 5	ASM, NEU, PRT, XAS, XPR
<b>Rhino</b>	4, 5	3DM
<b>Siemens PLM Software NX</b>	Unigraphics V11.0 to NX 10	PRT
<b>Solid Edge</b>	V19 - 20, ST - ST7	ASM, PAR, PWD, PSM
<b>SolidWorks</b>	Up to 2015	SLDASM, SLDPRT
<b>STEP</b>	AP 203 E1/E2, AP 214, AP 242	STP, STEP, STP.Z
<b>Stereo Lithography (STL)</b>	All Versions	STL
<b>Universal 3D (U3D)</b>	ECMA-363 (1 <sup>st</sup> to 3 <sup>rd</sup> editions)	U3D
<b>VDA-FS</b>	Version 1.0 and 2.0	VDA
<b>VRML</b>	V1.0 and V2.0	WRL, VRML

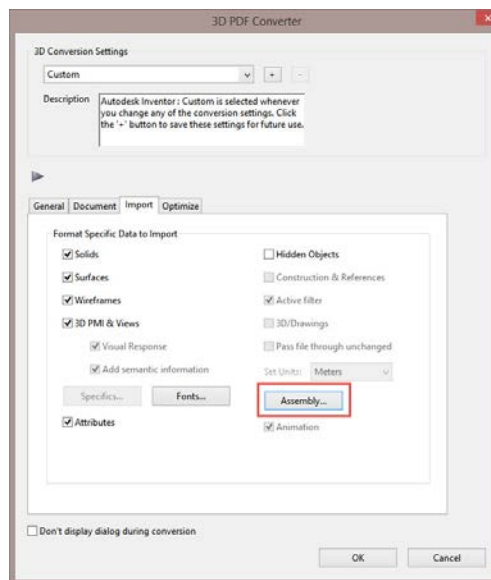
## New Features/Enhancements

This release of 3D PDF Converter adds the following new or improved functionality:

### Autodesk Inventor

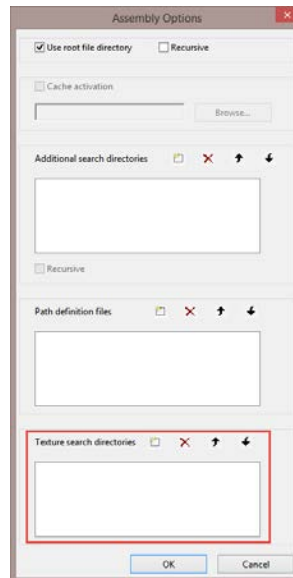
- **Support for Autodesk Inventor 2015 files**
- **Support for diffuse textures**

The directory where texture files are located can be set by selecting the *Assembly* button from the *Import* tab of the *3D Conversion Settings* dialog box:



## Autodesk Inventor (continued)

The Texture search directories field can be used to specify directories that will be searched for texture files:



## CATIA V5

- **Support for CATIA V5-6R2014**
- **Piping elements are now supported**

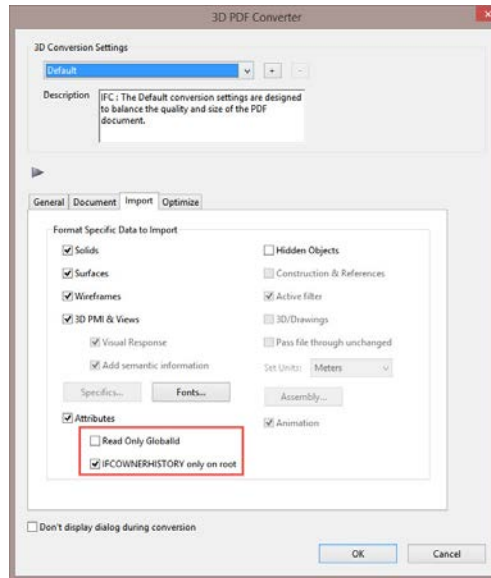
## Industry Foundation Classes (IFC)

- **Improved file import performance**

## IFC (continued)

- **Two options have been added for controlling how attributes are imported.**

These options are set on the *Import* tab of the *3D Conversion Settings* dialog box:



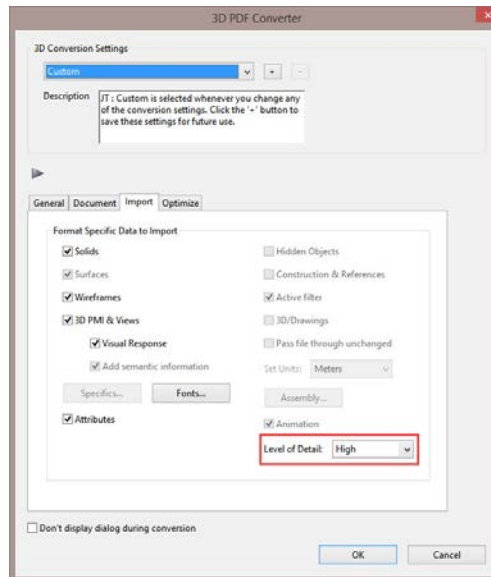
## JT

- **Support for JT version 10 files**
- **Support for ULP (Ultra-Lightweight Precise) B-rep data**

## JT (continued)

- **Level of Detail (LOD) support**

This release adds the ability to select which LOD setting in the JT file is used when creating a 3D PDF file. The imported LOD can be selected on the *Import* tab of the *3D Conversion Settings* dialog box:



## Parasolid

- **Support for v27.0 files**

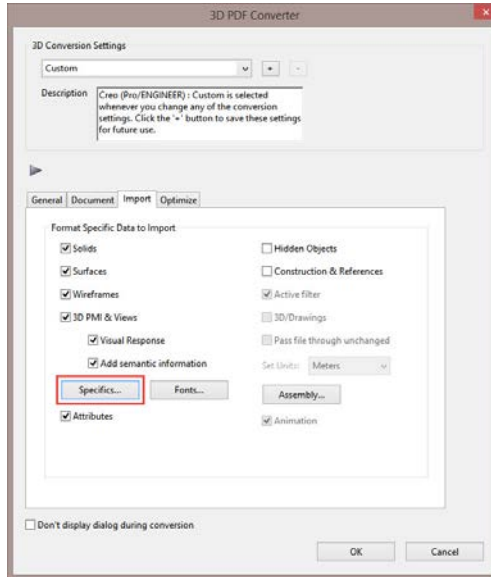
## PTC Creo

- **Support for Creo Parametric 3.0 files**
- **Improved PMI data positioning**

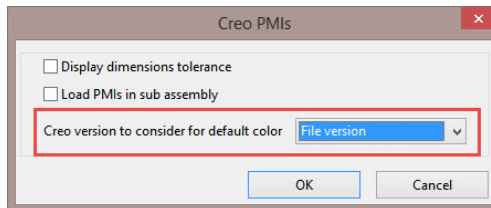
## PTC Creo (continued)

- **User selection of default PMI color source**

This option is set using the *Specifics* button on the *Import* tab of the *3D Conversion Settings* dialog box:



The pull-down menu can be used to set the default color to be the same as the default color used in specific versions of Creo:



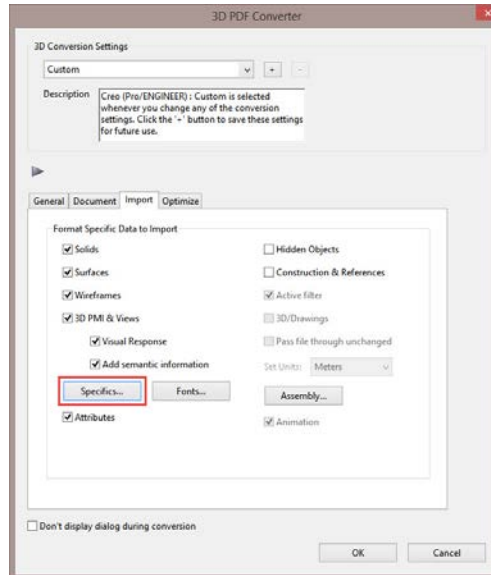
## Siemens PLM Software NX

- **Support for NX 9.0.2 and 10 files**
- **Improved PMI support**

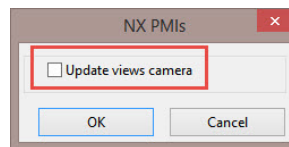
## Siemens PLM Software NX (continued)

- **Option added to automatically set the camera position of views**

3D PDF Converter can now automatically recalculate the camera orientation of imported PMI views. This option is set using the *Specifics* button on the *Import* tab of the *3D Conversion Settings* dialog box:



Checking the *Update views camera* box causes the system to recalculate the orientation of each views camera on import:



## Solid Edge

- **Support for Solid Edge ST7 files**

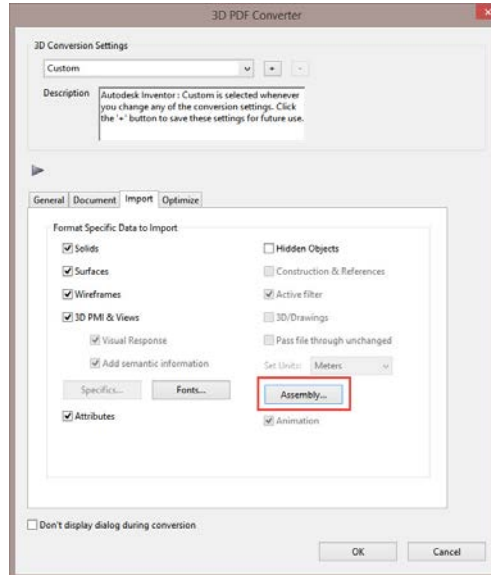
## SolidWorks

- **Support for SolidWorks 2015 files**
- **Improved PMI support**
- **Support for views**

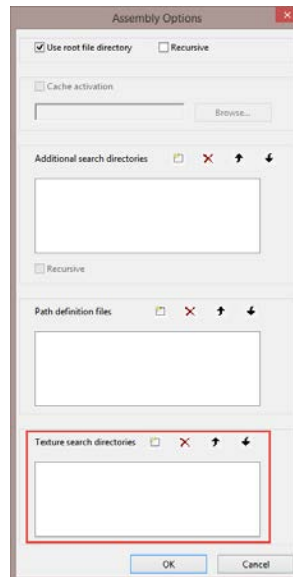
## SolidWorks (continued)

- **Support for diffuse textures**

The directory where texture files are located can be set by selecting the *Assembly* button from the *Import* tab of the *3D Conversion Settings* dialog box:



The Texture search directories field can be used to specify directories that will be searched for texture files:



## Bug Fixes

The 5.0 release of the 3D PFD Converter fixes over 150 customer reported issues. Please contact [support@tetra4d.com](mailto:support@tetra4d.com) if you have questions about any specific issue.